

Designed by Nature



Simply Brilliant - Brilliantly Simple

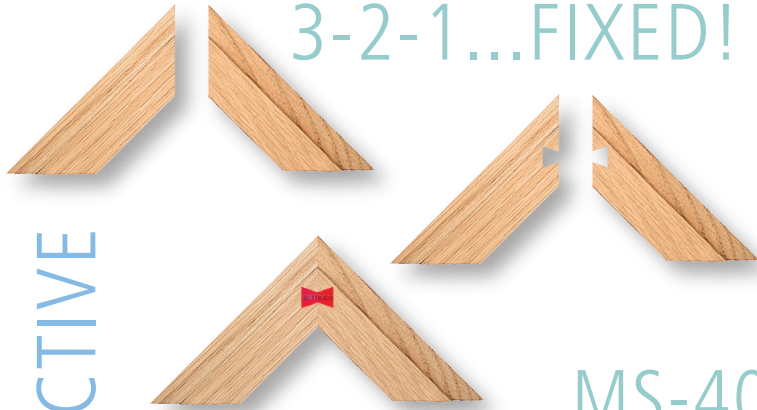


...the Hoffmann Dovetail Key

Designed by Nature



3-2-1...FIXED! PU-2



EFFECTIVE

MS-40-SF-NC

TOUCH
SCREEN



FLEXIBLE

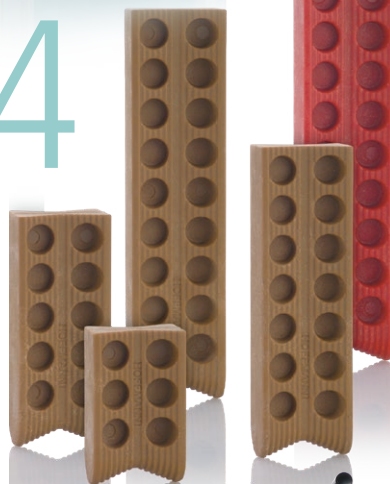


W4

PP-2

NC-BASED

NETWORK
CONNECTION



MU-S
TRANSPORTABLE



W1



MS-35-SF

PNEUMATIC



MU-3



...the Hoffmann Dovetail Key



W3



CUTTING
ROUTING
DRILLING

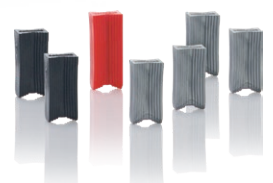


W2

MU-3
MANUAL



SPECIAL COLOURS



AUTO-
MATIC



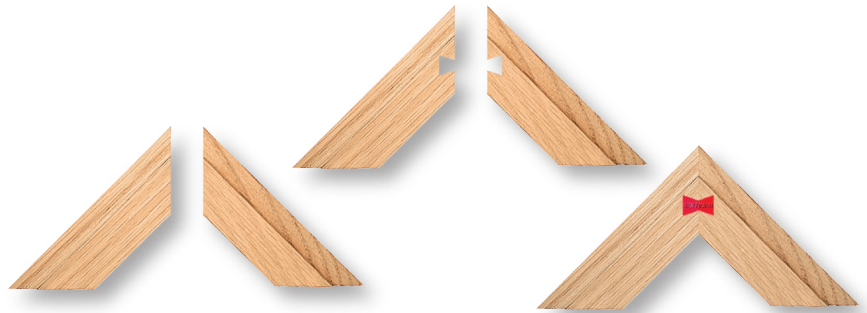
The Hoffmann Key

Simply Brilliant - Brilliantly Simple

Hoffmann Keys have many applications and are extremely versatile. For each application there is an appropriate size of length. Hoffmann keys are manufactured from high quality polymers in a standard brown colour. Further options of colour or special requirements are possible.

3 – 2 – 1 fixed!

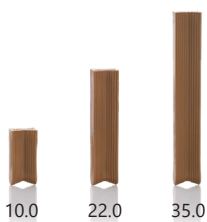
Rout a dovetail slot in each workpiece, from the reverse side. Position the two pieces together. Insert the Hoffmann Key...finished.



Work effectively and versatile!

The technical properties of Hoffmann Keys, along with the decades of industrial use, make them one of the most important fasteners in the woodworking manufacture. Available in numerous lengths 6 mm to 102 mm and cross-sections W-0 to W-4.

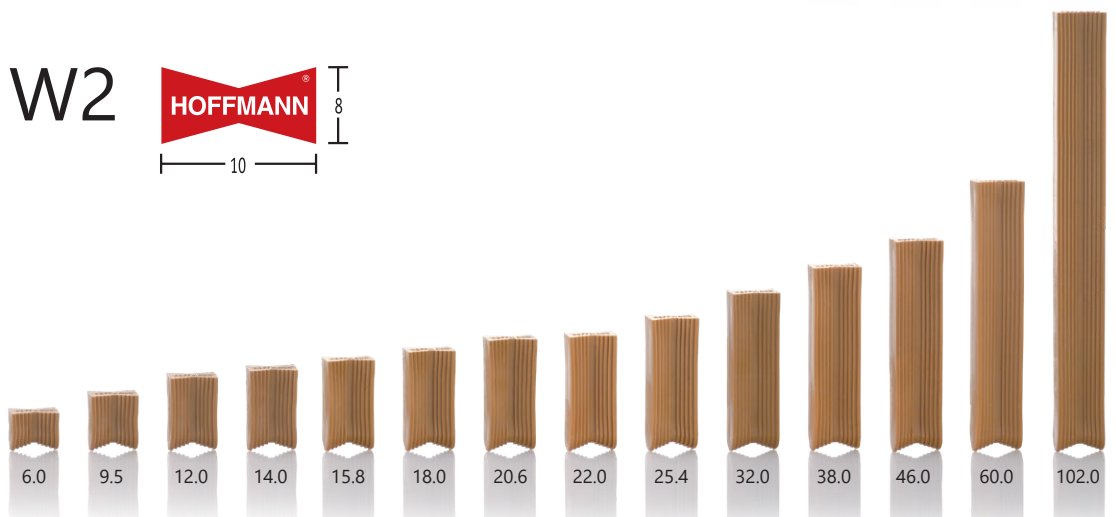
W0



W1

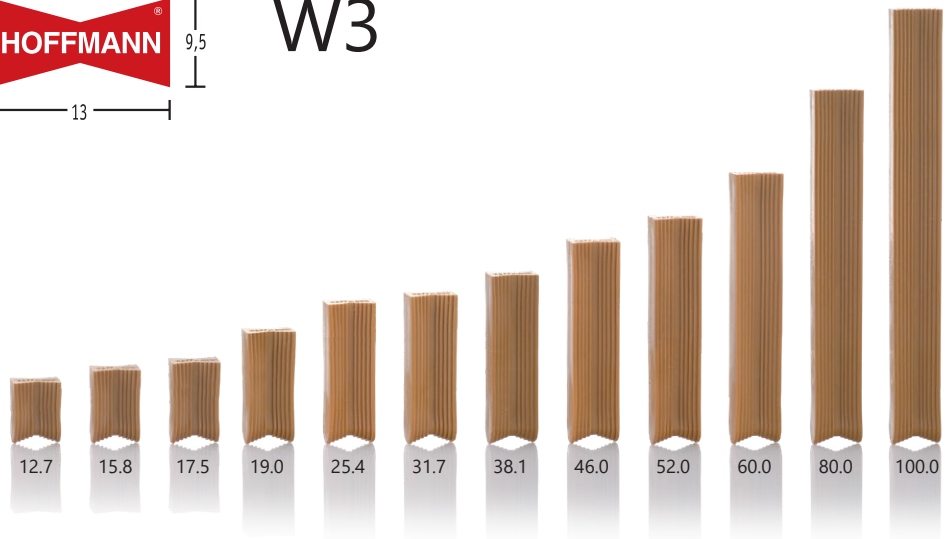


W2

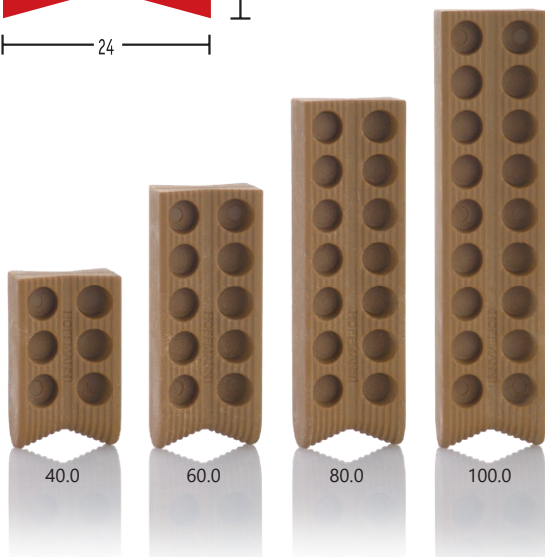




W3



W4



Specials

Hoffmann Keys are also available in special shapes and customer-specific configurations according to numerous application areas. Heat-resistant versions, keys with cap, etc. represent only a small selection of possibilities.



Colour and materials

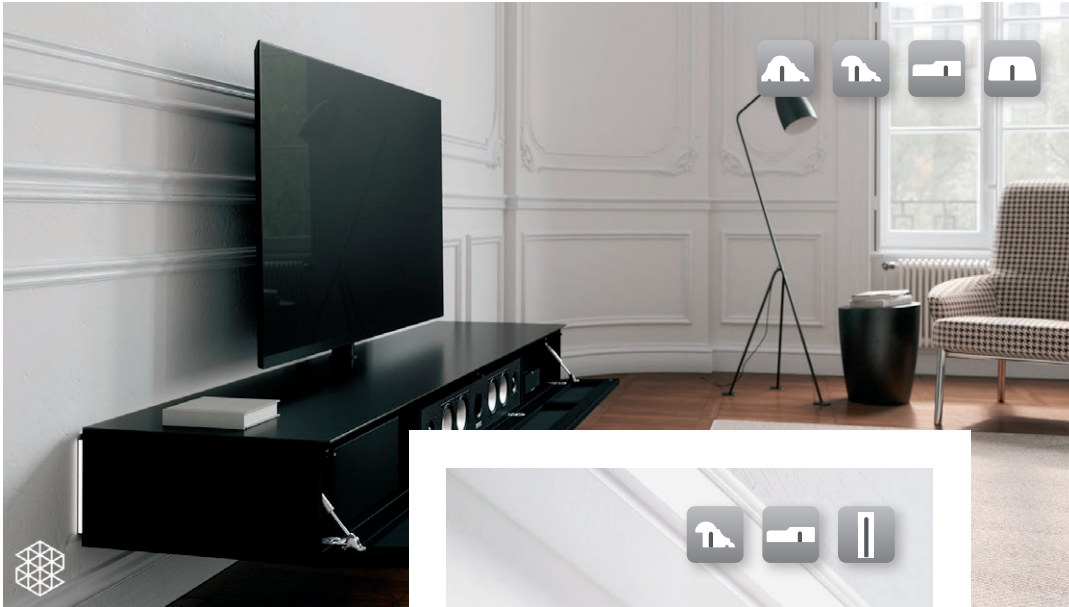
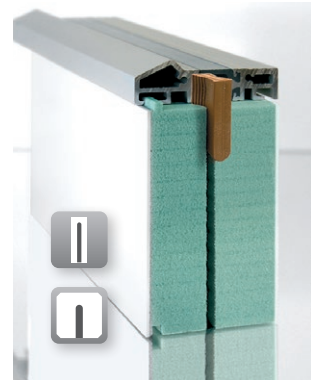
Likewise, special colours and different lengths and shapes are possible. Additionally the keys can be made of wood or in particular heat-resistant material.





The Potential Applications e. g. ...

The performance range of the Hoffmann Key is extremely versatile and can be used in all areas of wood processing. The key can even be used as a design element in high quality furniture production.



Window production

- Wooden, PVC and wood-/aluminium windows
- Casement frame
- Sash
- Mullion connection
- Cross bars
- Glazing beads
- Insulation

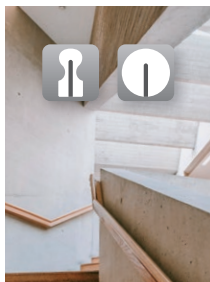
Door manufacturing

- Door frames
- Architraves
- Door inserts
- Stacking frame

Carpentry

- Post and beam construction
- Conservatory
- Sauna manufacturing
- Block house construction
- Ceiling and wall coverings
- Handrails





Kitchen and furniture

- Cornices
- Picture frames
- Skirting
- Lightning shades
- Doors
- Glazing cassettes
- Bolection mouldings
- Architraves
- Drawers and dividers
- End strips
- Face-frames
- Lamps
- Shelves
- Plastic frames





The Hoffmann Machine Technology Routing Machines

As a complete service provider, and comprehensive systems developer for wood joints, Hoffmann presents respective machines and technology for processing material for manufacture with Hoffmann Keys. The machine product range extends from hand-held machines for site assembly, through standardized machines in various design formats, to bespoke machines designed to customers' specific production solutions.

Bench-top models

Designed and built in a range of sizes, with various capacities and output potential, as well as available with various routing depths. Manual and pneumatic machines, with many accessories, are built for different applications.



Free-standing models

For industrial production, Hoffmann offers semi-automatic machines with many additional features. These models are built with a solid cast table and large working surface at a comfortable working height. Multiple spindle heads guarantee an efficient production with even high quantities.





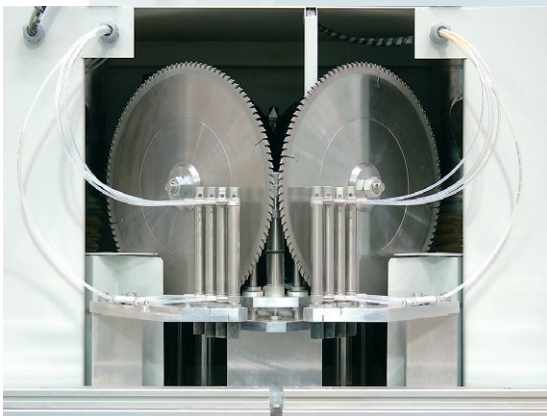
The Hoffmann Machine Technology

Saws and machining centers

A mitred corner has always been recognised as feature of quality in the wood processing industry. A high degree of precision is required to achieve these joints and all our double mitre saws and combination saw / routing machines are designed for this. Uncompromising accuracy is important. When mitre joints are made, especially when visible, the 45° cut must be perfect.



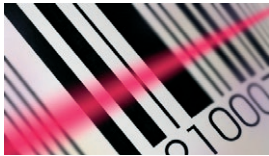
MS 35 Double Mitre Saw and MS 35-SF combination Double Mitre Saw and Routing Machine, are the base of the Hoffmann cutting technique. Equipped with modern control technology "Made in Germany".



Customized machine solutions, with extensive control and programming options, enable the implementation in company networks and production environment. It is even possible to adapt the respective software.



Secure and user friendly operation



Barcode reader



Cut length optimising



With the experience of recent years, market and product development, and above all the encouragement of our customers, has led to the development of the new machine MX-5 NC. One machine - many applications.

Individual customer system solutions

Often, standard machinery, even with available options, will not fit the required working process. Specific machine configurations can be designed to meet an actual production specification.

Hoffmann Engineering Services division (IDL) specializes in building individual and efficient production solutions for the processes of sawing, routing, drilling and assembling. The scope of our services includes the development and design of efficient process sequences, optimizing the processes with engineering solutions, including software and hardware.



Information & Services

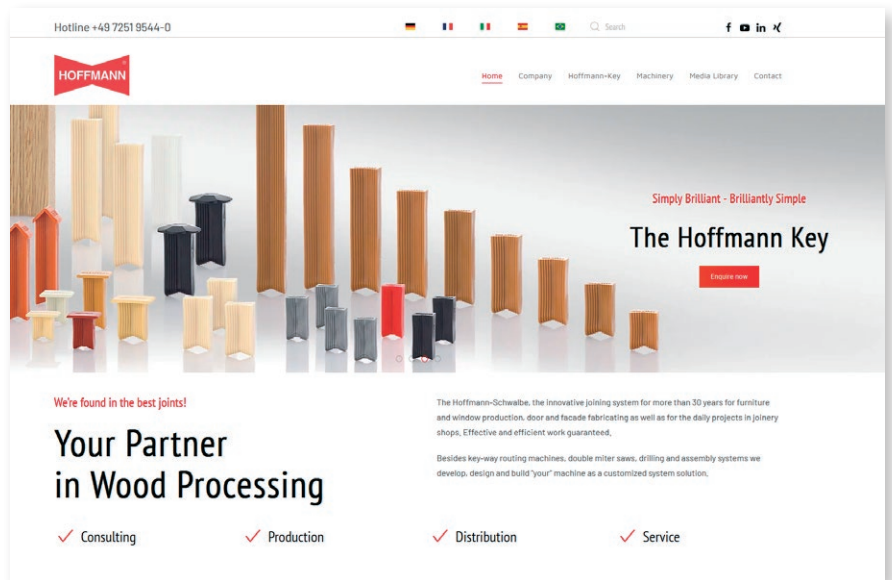
Today fast response and flexibility is required – also in our area.

Wherever our advice is needed we offer our customers comprehensive information as well as cooperative support.

Homepage

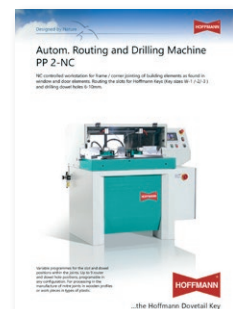
News and interesting facts about the Hoffmann product range:

hoffmann-schwalbe.de



Data Sheets

Technical data and further information can be found in the respective machine category on our website.



Contact

For further information please call our hotline or send us an email.

Hotline: +49 (0) 72 51 / 95 44-0



Hoffmann GmbH Maschinenbau

Mergelgrube 5 · D-76646 Bruchsal

Tel: +49 (0) 72 51 - 95 44 0, Fax: +49 (0) 72 51 - 95 44 44

info@hoffmann-schwalbe.de, www.hoffmann-schwalbe.de

Subject to technical changes. Printed in Germany.

